



ANNUAL MEETING & CONFERENCE

OUR VOICES HEARD, OUR LEADERSHIP RESPECTED

NACHW 2024 ANNUAL MEMBER MEETING

LET'S CELEBRATE!

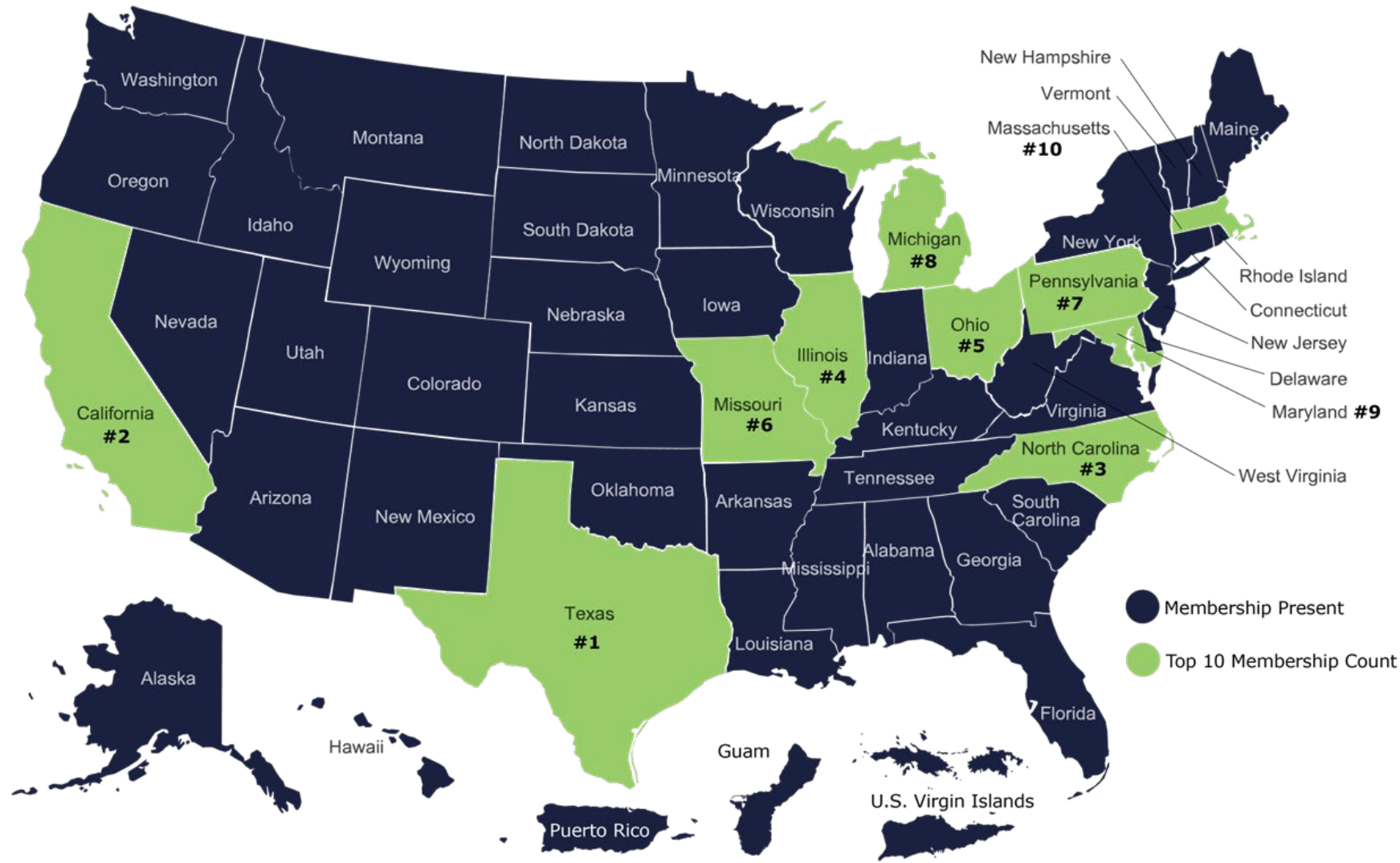
EXECUTIVE DIRECTOR REPORT - FY2025
DENISE OCTAVIA SMITH, CHW, PN, MBA

UNITING ALL CHWS!

THE MOMS, DADS,
CARE GIVERS,
PEERS, LEADERS,
GRANDPARENTS,
ADVOCATES...
MENTORS...
SURVIVORS...
MOVEMENT
BUILDERS...



CELEBRATING MEMBERS IN ALL 50 STATES!



Winning a Congressional Resolution for National CHW Awareness Week 2023! And We Will Win Resolutions in 2024!



118TH CONGRESS
1ST SESSION

H. RES. 722

Supporting the designation of the week of September 18 through September 22, 2023, as “National Community Health Worker Awareness Week”.

IN THE HOUSE OF REPRESENTATIVES

SEPTEMBER 21, 2023

Mr. RUIZ submitted the following resolution; which was referred to the Committee on Energy and Commerce

RESOLUTION

Supporting the designation of the week of September 18 through September 22, 2023, as “National Community Health Worker Awareness Week”.

JOIN US THIS YEAR
TO REALIZE OUR
STRATEGIC PLAN!

NACHW
NATIONAL ASSOCIATION OF
COMMUNITY HEALTH WORKERS

FY2023 - 2025 Strategic Plan

of the
National Association of Community Health Workers



“Community Health Workers are the workforce we need
for the world we want.”

-Denise Octavia Smith, CHW, PN, MBA, Inaugural Executive Director

STRATEGIC PRIORITY 1: TRAINING AND PROFESSIONAL DEVELOPMENT



GET INVOLVED THIS **FALL 2024!**

- NACHW Webinar: Celebrating CHWs Role in Increasing Vaccination Equity on September 18th 3-4pm EST
- Apply to present a NACHW Webinar for **Hispanic Heritage Month** (October) or **Native American Heritage Month** (November)
- SAVE THE DATE: NACHW Webinar: How to Get Involved with NACHW on December 11th 3:00-4:30pm EST

STRATEGIC PRIORITY 2: POLICYMAKING AND ADVOCACY



Join NACHW and Partners in Health for our **national CHW policy working group**

Up to 150 organizations
meet bi-weekly!

Email akuzma@hria.org
to sign up!



JOIN OUR 2ND ANNUAL CHW AWARENESS WEEK

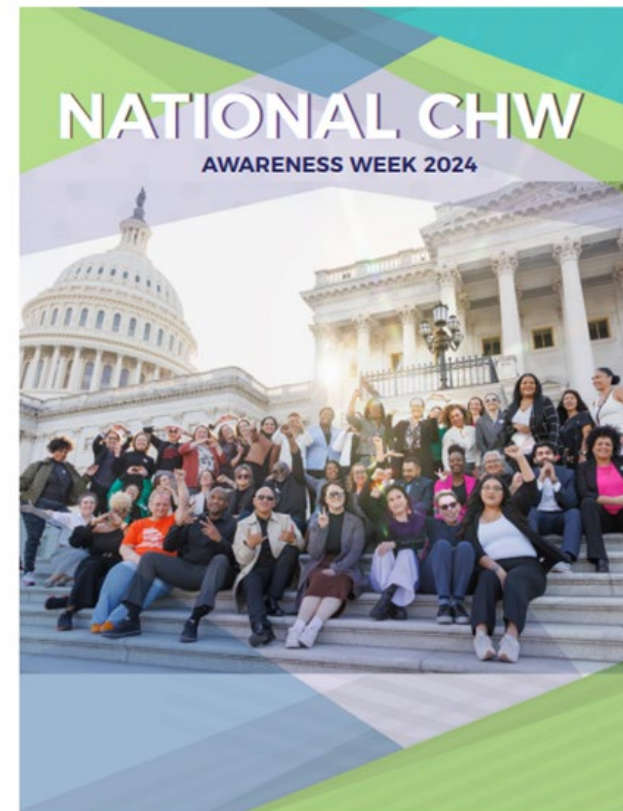
AUG 26-30, 2024

Email
kmartinez@hria.org

www.nachw.org/nchwaw

2024 | OUR VOICES HEARD, OUR LEADERSHIP RESPECTED

NACHW | LEADERS IN
NATIONAL ASSOCIATION OF | COMMUNITY
COMMUNITY HEALTH WORKERS | HEALTH



2ND ANNUAL • AUGUST 26 - 30, 2024

TOOL KIT

COLLABORATE

COMMEMORATE

CELEBRATE

#nchwaw2024

STRATEGIC PRIORITY 3: NATIONAL PROFESSIONALIZATION AND UNIFIED IDENTITY FOR CHWS NATIONALLY



CENTER OUR IDENTITY, SHARE OUR HISTORY, ALIGN OUR LANGUAGE

SIX PILLARS OF THE CHW PROFESSION!



The Six Pillars of Community Health Workers

Community Health Workers are the past, present and future leaders of community health and wellbeing. NACHW has developed these Six Pillars of the profession to bolster CHWs' national professional identity, the crafting of policy, and capacity to achieve sustainability of our profession and health, equity, and social justice for our communities. CHWs and allies alike are encouraged to spread the word about the Six Pillars of CHWs!




A Unique Field

With a unique set of core competencies, CHWs are an underappreciated yet crucial workforce that promote social justice and help to achieve health equity and wellbeing for all.



Community-based

Trust, respect, dignity, community advocacy – these values and more drive CHWs in their mission to alleviate the social determinants of health and achieve equity.




Historic & Diverse

CHW history goes back centuries – the first were tribal healers. As a reflection of the country they call home, they are diverse in ethnicity, language, and culture.




Cross-sector Workers

CHWs embrace a holistic health philosophy that considers the social determinants of health, and their collective strength in their mission to achieve true health equity.



A Proven Workforce

CHWs are integral to clinical, public health, and social systems. 60 years worth of study and research have shown just how important CHWs are in various medical fields.



A Precarious Workforce

As a majority-female workforce, CHWs face challenges like low pay and discrimination. The CHW profession lacks sustainability in recruitment and retention.

CONNECT WITH YOUR 2025 AMBASSADORS!

A grid of 20 video call thumbnails, each showing a different individual. The thumbnails are arranged in a 5x4 grid. Each thumbnail includes a name and a small red icon with a slash, likely indicating a mute status. The individuals are diverse in age and ethnicity. Some thumbnails have logos in the background, such as NACHW (National Association of Community Health Workers), UCLA Health, FSRU (Fair Share Rising Up), and CHW (Community Health Worker). The thumbnails are set against a background of colorful balloons in shades of blue, green, yellow, pink, and purple.

Iris Reano	Denise Smith, NACHW	Luis Lagos	Chauncey Hatico, Program ...
Buhrman, Liz	lillief	maddie ruth (she/her)	Matilde Flores
Tasha Whitaker (NACHW) (she/...	Dayana Camacho	Israel A. Roman-Martinez	Swanette Salazar (she/her)
Aurora GrantWingate (NAC...	LREYES1	Patricia Wilson	Stephanie Toney, CHW Stren...
Wilma Rivera-Rodriguez	Mattie Clark	Carol Parnell	

STRATEGIC PRIORITY 4: LOCAL, STATE AND REGIONAL CHW NETWORKS AND ASSOCIATIONS



DOWNLOAD THE NEW CHW NETWORK INSIGHTS REPORT

Visit the new
NACHW Reports
page at
www.nachw.org



NACHW 2023 DATA REPORT:
INSIGHTS ON CHW NETWORK
PARTNERSHIPS, EXPERTISE AND SUPPORT
NEEDS FOR SUSTAINABILITY

AUTHORS

Denise Octavia Smith, CHW, MBA, PN
and Allison R. Joslyn, MA

NACHW | LEADERS IN
COMMUNITY

CHW Connector – the FREE APP for ALL CHWs.
JOIN. LEARN. SHARE. GROW. ADVOCATE.



Discover CHW Networks

- Click the CHW Networks Icon
- Followed by the Discover Icon
- Scroll though to find and follow CHW Networks from around the nation
- More Networks and Associations will be added to the platform soon so don't forget to check back every time you log in!!!

The screenshot displays the CHW Connector website interface. At the top, there is a navigation bar with icons for Home, Communities, CHW Networks (highlighted with a red box), Public Health Alerts, Messages, and Notifications. Below the navigation bar, the main content area is titled "CHW Networks" and includes a brief description: "CHW Networks and Associations are the official group pages of local, state, and regional organizations led by or co-led by CHWs, Promotoras and Community Health Representatives and Peers in our profession. Follow them. Learn about their events. Get updates and Join the discussion!". A yellow alert banner at the top right states: "ALERT - 8/20/2024, 3:01 PM: CDC Health Alert Network (HAN) Has Issued a Health Advisory on Increase in Human Parvovirus B19 Activity in the United States. Click to learn more about how CHWs can help communities impacted." Below the alert, the "Discoverable CHW Networks" section features a grid of network cards. Each card includes a logo, the network name, and the number of members, with an "Unfollow" button. The visible networks are: Minnesota Community Health Worker Alliance (7 members), Vermont Association of Community Health Workers (6 members), Louisiana Community Health Outreach Network (7 members), Virginia Community Health Worker Association (6 members), National Association of Community Health Workers (NACHW), Montana Community Health Worker Association, Community Health, and DFW-CHW Association.

Discover Communities

- Communities are CHW Driven Topic Groups
- Click the Communities Icon
- Followed by the Discover Icon
- Scroll though to find and follow CHW Networks from around the nation
- Don't see a topic you are interested in? Just ask ask and we will work to add it. Check the Discover tab every time you log in to find new Communities!!!

Communities

CHW Connector Communities. Get NACHW updates and emergency alerts. Join CHW Networks and Associations. Find CHWs in your state. Join learning communities.

My Feed

Discover

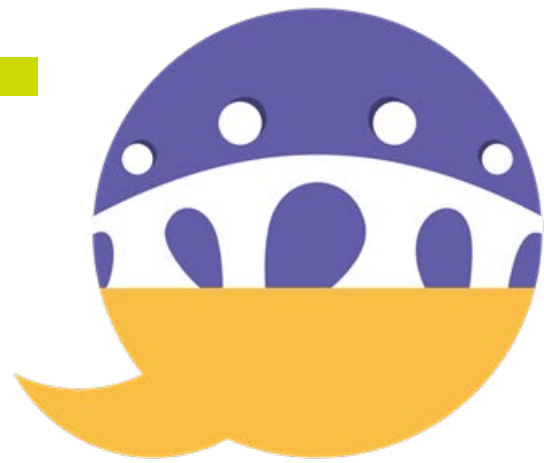
My Communities

+ Request New Community

ALERT - 8/20/2024, 3:01 PM: CDC Health Alert Network (HAN) Has Issued a Health Advisory on Increase in Human Parvovirus B19 Activity in the United States
Click to learn more about how CHWs can help communities impacted.

Discoverable Communities

- Working with Veterans**
6 members
Unjoin
- Suicide Prevention**
6 members
Unjoin
- Faith Based Services**
5 members
Unjoin
- Injury and Violence Prevention**
6 members
Unjoin
- Justice Impacted / Returning Citizens**
7 members
- Patient / Resource Navigator**
7 members
- Immigrant Community**
7 members
- Bilingual and Language Services**
4 members



CHW *connector*

On the Web @ CHWConnector.org



[CHW Connector for iOS](#)



[CHW Connector for Android](#)

STRATEGIC PRIORITY 5: RACIAL AND HEALTH EQUITY



Listen to the Podcast and Download the Editorial



“Community Health Workers”

  Denise Octavia Smith	  Abdul Hafeedh bin Abdullah
  Rumana Shams Rabbani	  Ruqaiijah Yearby

THE LANCET
Global Health Log in

COMMENT | VOLUME 11, ISSUE 10, E1484-E1485, OCTOBER 2023 [Download Full Issue](#)

Labour exploitation among community health workers

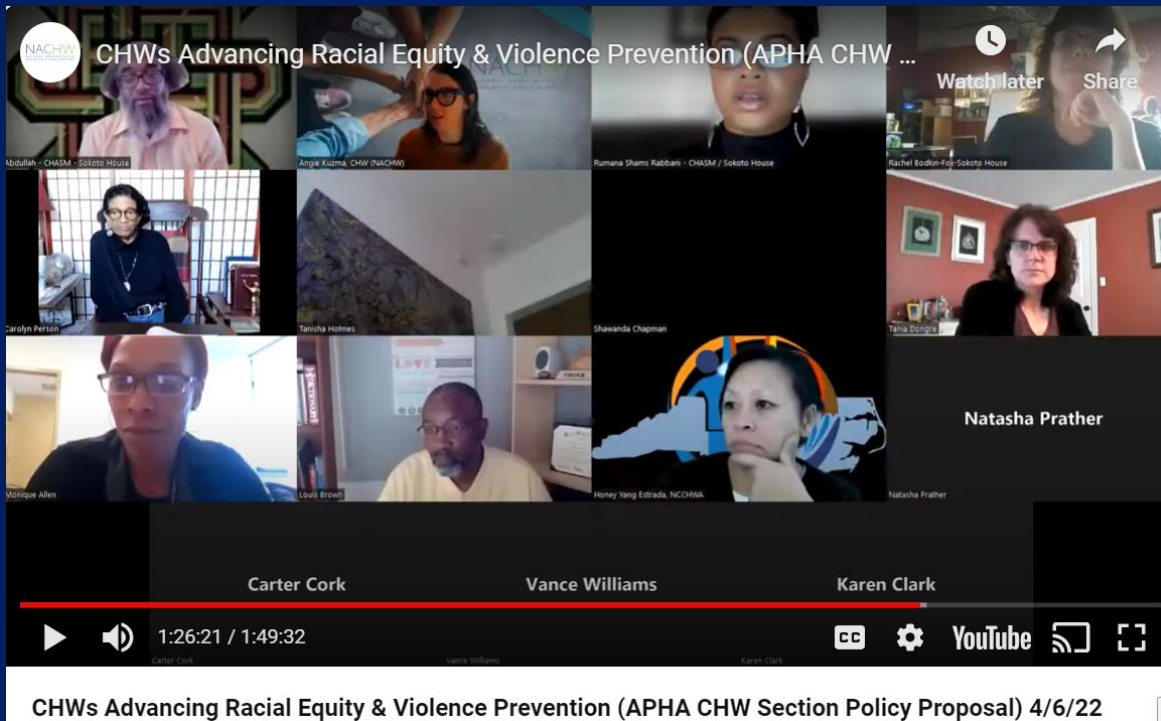
Ashley Wennerstrom • Denise Octavia Smith

[Open Access](#) • Published: October, 2023 • DOI: [https://doi.org/10.1016/S2214-109X\(23\)00409-6](https://doi.org/10.1016/S2214-109X(23)00409-6) • [Check for updates](#)

PlumX Metrics

In *The Lancet Global Health*, Madeleine Ballard and colleagues¹ report on dual-cadre systems, in which unsalaried community health workers work alongside paid health-care workers. The finding that nearly 60% of unsalaried workers and one in ten salaried workers experience labour exploitation is concerning. Considering that community health workers are primarily

FOLLOW THE APHA POLICY ON CHWS ROLES IN RACIAL EQUITY AND VIOLENCE PREVENTION



A Strategy to Address Systemic Racism and Violence as Public Health Priorities: Training and Supporting Community Health Workers to Advance Equity and Violence Prevention

Date: Nov 08 2022 | Policy Number: 20227

Key Words: Community Health, Racism, Violence Prevention, Health Equity

STRATEGIC PRIORITY 6: ORGANIZATIONAL SUSTAINABILITY



CELEBRATE OUR FOUNDERS AND BOARD! THANK YOU, NAOMI! FOREVER IN OUR HEARTS!







**UNITY
2025
SEE YOU
THERE!**

